

VARIANT COMPARISON



DUAL VVT-i
Smart Entry with Smart Key & Push Start/Stop Button

AV
Multimedia System with Navigation
Semi-bucket Leather Seats

- 5-star ASEAN NCAP
- Advanced Safety Assist (A.S.A.) 2.0
- Hill-start Assist (HSA)
- LED Headlamps
- Retractable Side Mirrors with Turn Signals
- Front Corner Sensors
- Reverse Sensors
- Reverse Camera



DUAL VVT-i
Smart Entry with Smart Key & Push Start/Stop Button

X
Audio System with USB & Bluetooth
Semi-bucket Fabric Seats

- 4-star ASEAN NCAP
- Vehicle Stability Control (VSC)
- Traction Control (TRC)
- LED Headlamps
- Side Mirrors with Turn Signals
- Front Corner Sensors
- Reverse Sensors



VVT-i
Key with Integrated Remote Control

G
Audio System with USB & Bluetooth
Standard Type Fabric Seats

- 4-star ASEAN NCAP
- ABS (Anti-lock Braking System) with EBD (Electronic Brake Distribution)
- LED Headlamps
- Side Mirrors with Turn Signals
- Reverse Sensors
- 508ℓ Luggage Space



TECHNICAL SPECIFICATIONS

MODEL	G		X		AV	
	5 MT	1.0 ^ℓ 4 E-AT	4 E-AT	1.3 ^ℓ	4 E-AT	
DIMENSIONS & WEIGHT	TRANSMISSION		4 E-AT		4 E-AT	
	Overall length/width/height	mm	4170/1620/1525			
	Interior length/width/height	mm	1900/1385/1240			
	Wheelbase	mm	2455			
	Couple distance	Front & rear	mm	890		
		Driver & passenger	mm	640		
	Track	Front	mm	1410		1405
		Rear	mm	1405		1400
	Kerb weight	kg	865	880	925	940
	Luggage capacity	ℓ	4.5		5.0	
ENGINE	Engine type	1KR-VE		1NR-VE		
	Valve mechanism	DOHC with VVT-i		DOHC with DUAL VVT-i		
	Total displacement	cc	998		1329	
	Bore x stroke	mm	Ø 71.0 x 84.0		Ø 72.5 x 80.5	
	No. of cylinders	3		4		
	Compression ratio	11.5:1				
	Max. output (DIN)	kW/rpm	50/6000		70/6000	
	Max. torque (DIN)	Nm/rpm	91/4400		121/4000	
	Fuel consumption (with Eco-driving)	km/ℓ	22.8	21.3	21.0	22.0 with 'Eco Idle'
	'Eco Idle' system (Idling stop system)	-		-		-
Fuel tank capacity	ℓ	36		36		
CHASSIS	Tyres & disc wheels	175/65 R14 (14" alloy rims)		175/60 R15 (15" two-tone alloy rims)		
	Spare tyre	-		-		
EXTERIOR	Front & rear bumper	-		-		
	Side skirts with two-tone colour	-		-		
	Front grille	Glossy black & silver finish		Glossy black & chrome finish		
	LED headlamps	-		-		
	Front fog lamps	-		-		
	Electric side mirrors	With turn signals		Retractable with turn signals		
	Outer door handles	-		-		
	Rear combination lamps	-		-		
	Blacked-out pillar	-		-		
	Instrument panel	-		-		
INTERIOR	Centre cluster	-		-		
	Meter combination	-		-		
	Seats	Front	Standard type with detachable headrest	Semi-bucket type with detachable headrest	High-grade type with detachable headrest	Leather
	Seat cover material	Rear	Standard type with integrated headrest	Fabric	Fabric	Leather
	Door trims	Full trim		Full trim with fabric finish		
	Door armrests	-		-		
	Inside door handles	-		-		
	Seat back pockets (driver & passenger's side)	-		-		
	Multipurpose compartment	-		-		
	Under-luggage compartment	-		-		
COMFORT	12V power socket	-		-		
	Audio	-		-		
	Speakers	Front (2)		Front (2) & rear (2)		
	USB port at rear console	-		-		
	Smart entry with smart key & push start/stop button	-		-		
	Multi-info display (service info, average fuel consumption, CFC, range)	-		-		
	Auto-off headlamps	-		-		
	Electric power steering	-		-		
	Steering wheel with audio switches	-		-		
	Power windows	With (one-touch function on driver's side)		With (one-touch function with jam protection on driver's side)		
SAFETY & SECURITY	Seat height adjuster (driver's side)	-		-		
	Front corner sensors	-		-		
	Reverse sensors	-		-		
	Reverse camera	-		-		
	Dual SRS airbags	-		-		
	ABS with EBD	-		-		
	Vehicle Stability Control (VSC)	-		-		
	Traction Control (TRC)	-		-		
	Brake Assist (BA)	-		-		
	Advanced Safety Assist (A.S.A.) 2.0	-		-		
ACCESSORIES	Solar & security window film	-		-		
	ISOFIX system	-		-		
	Anti-theft device	-		-		
	Wireless door lock & alarm	-		-		
	Central lock button on instrument panel	-		-		
	Seat belt reminder	-		-		
	Carpet mats	-		-		
	Safety triangle	-		-		
	Registration plate holder	-		-		
	Luggage net	-		-		

Specifications are subject to change without prior notice.

COLOURS



UFIRST**
Enjoy great benefits and get rewarded with UFirst. Plus, you can book your car service via E-Appointment at your convenience. Download UFirst app and activate your membership today.



Perodua Total Protect Plus with 24-hour Auto Assist**
Enjoy peace of mind. Every new Perodua comes insured with Total Protect Plus, which includes a free towing service and emergency assistance on-call 24/7 (1800-88-5555). Plus, you can renew your car insurance at any authorised Perodua outlet.

*X & AV variants only. **Terms & conditions apply. Colours shown may differ from the colours of the actual vehicles.

FOR MORE DETAILS

Visit your nearest Perodua showroom or call 1800 88 6600.

Actual accessories may differ from photographs. Please consult your sales advisor.



THE 2020
BEZZA
BEYOND COMPACT

BOLDER. SMARTER.
#LEBIHPADU



AV variant only. Terms and conditions apply.

SMART DESIGN

Restyled not only for the eyes but also for driving pleasure.



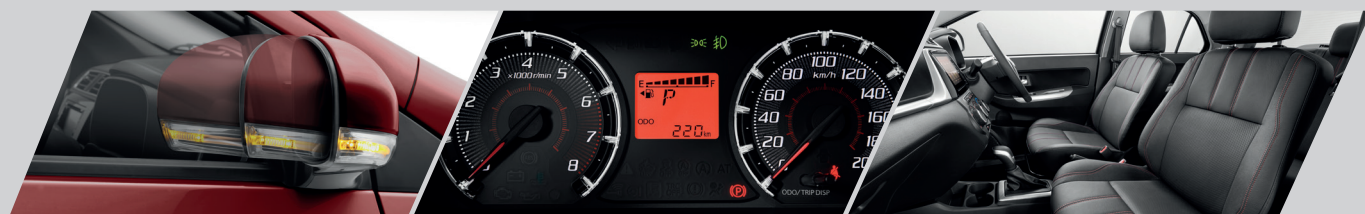
New LED Headlamps | New Front Grille & Bumper



New Two-tone 15-inch Alloy Rims

New Two-tone Side Skirtings

New Rear Bumper



Retractable Side Mirrors with Turn Signals

New Meter Comb (White Illumination)

New Semi-bucket Leather Seats

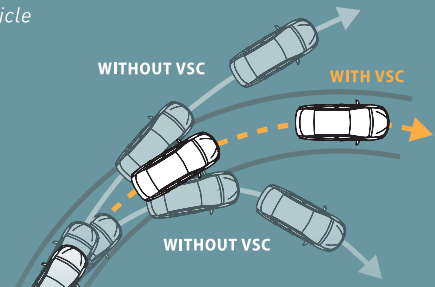
SMART SAFETY

Raising the bar for the safety of everyone, both in and around the car.

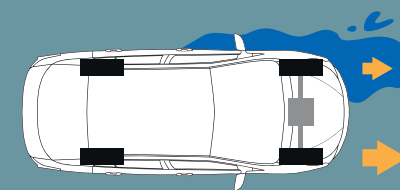


Advanced Safety Assist (A.S.A.) 2.0

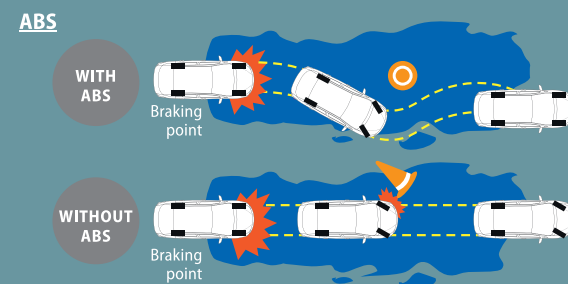
Vehicle Stability Control (VSC)
The system improves vehicle stability by detecting and reducing skidding.



Traction Control (TRC)
Improves safety when driving on slippery roads.



ABS (Anti-lock Braking System) with EBD (Electronic Brake Distribution)



Hill-start Assist (HSA)
Prevents your car from rolling backwards on steep surfaces after the brake is released.



Seat Belt Reminder (Driver & Front Passenger)



SMART DRIVE

Every drive is an enjoyable experience with smart technologies.



1.0L VVT-i & 1.3L DUAL VVT-i ENGINES

Primed for performance, made for efficiency. The Perodua Bezza's EEV engines are built lightweight and compact to improve fuel consumption, as well as to reduce levels of vibration and noise.

ENGINE	FUEL CONSUMPTION	
	5 MT	4 E-AT
1.0L VVT-i	22.8km/l	21.3km/l
1.3L DUAL VVT-i	-	21km/l**

22km/l
WITH 'ECO IDLE'

*Based on AV variant with 'Eco Idle'. **Based on X variant.



Smart Entry with Smart Key

Push Start/Stop Button



Multimedia System with Navigation & 'Smart Link' for Android

508L Luggage Space



Disclaimer: Specifications are based on AV variant.



Disclaimer: Specifications are based on AV variant.